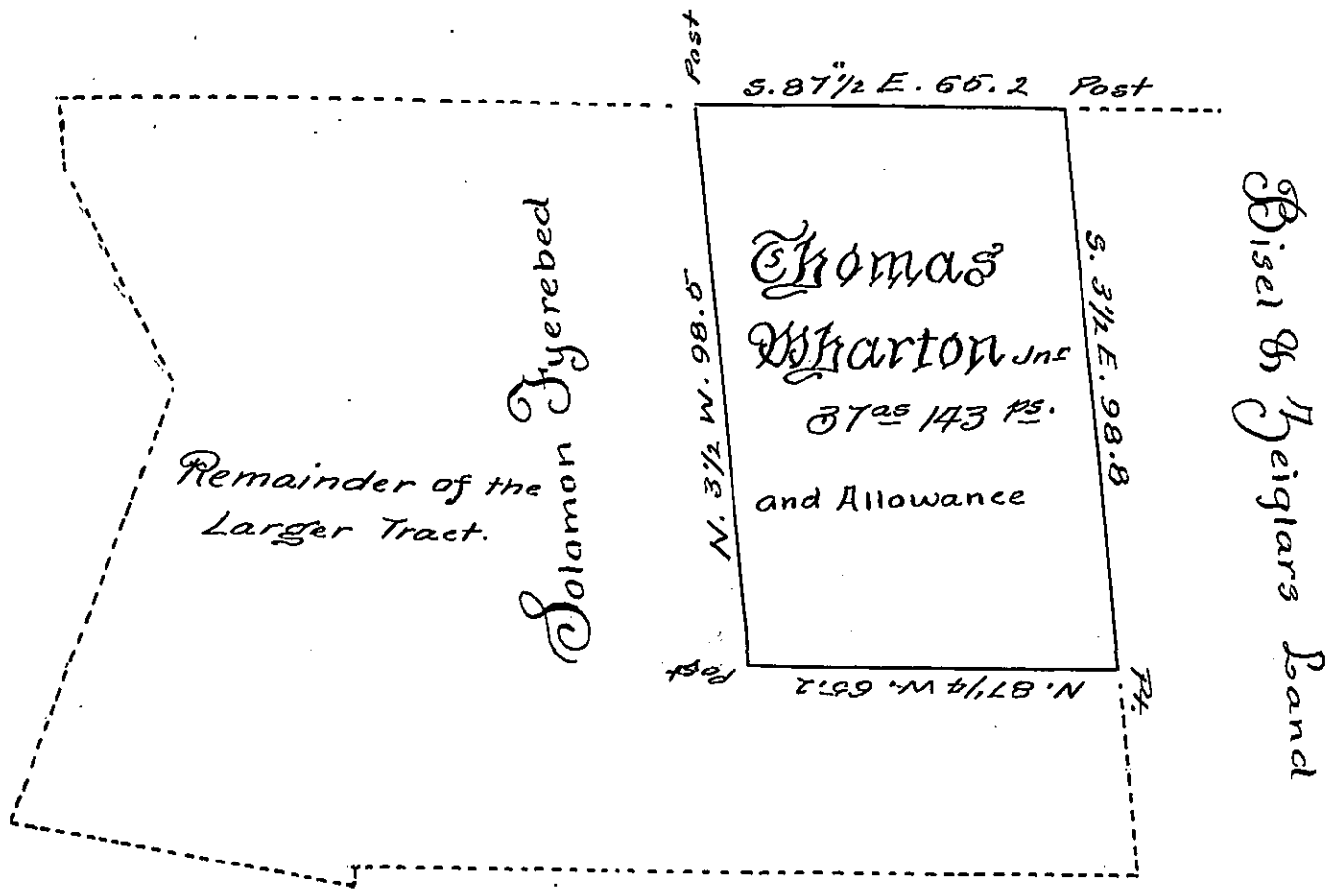


Thomas Wharton Jnr



Draught of a Tract of Land situate in Eastpenn<sup>boro</sup> Township Cumberland County Containing thirty seven Acres & one hundred and forty three perches & allowance of six  $\frac{1}{2}$  Cent for Roads &c. it being part of a larger Tract, Containing 139<sup>ac</sup> 84<sup>ps</sup> & allowance, Surveyed In pursuance of a Warrant granted to Samuel Fisher, dated the 15<sup>th</sup> day of February Anno Domini 1748,  $\frac{6}{9}$  - July the 26<sup>th</sup> A. Dom. 1821.

Samuel Ruby D.S.

To Samuel Cochran Esquire  
Surveyor General

IN TESTIMONY that the above is a copy of the original remaining on file in the Department of Internal Affairs of Pennsylvania, made conformably to an Act of Assembly approved the 16th day of February, 1833, I have hereunto set my Hand and caused the Seal of said Department to be affixed at Harrisburg, this ~~Twenty-Seventh~~ day of ~~October~~ 1904.

*Isaac R. Brown*  
Secretary of Internal Affairs.